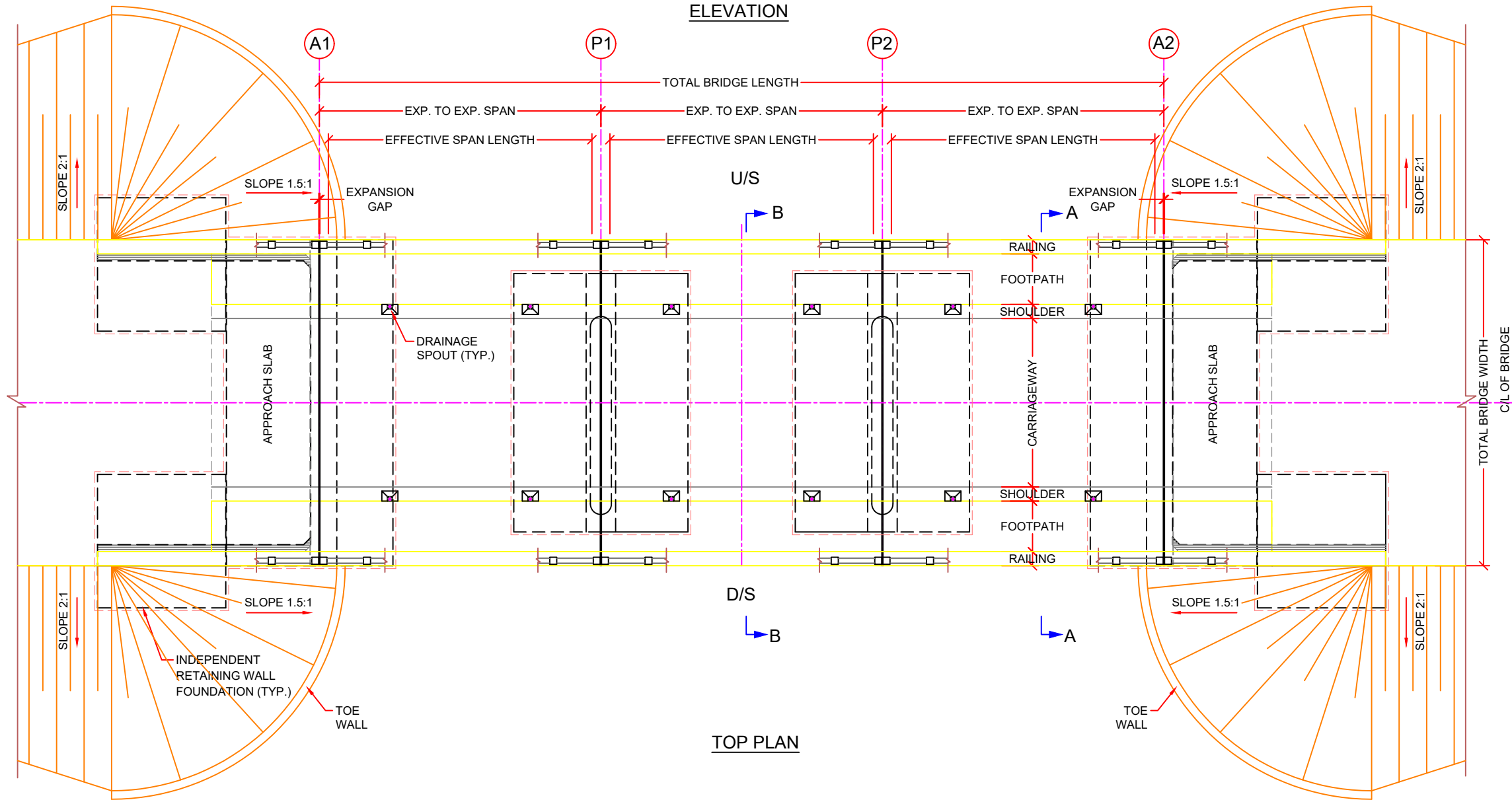



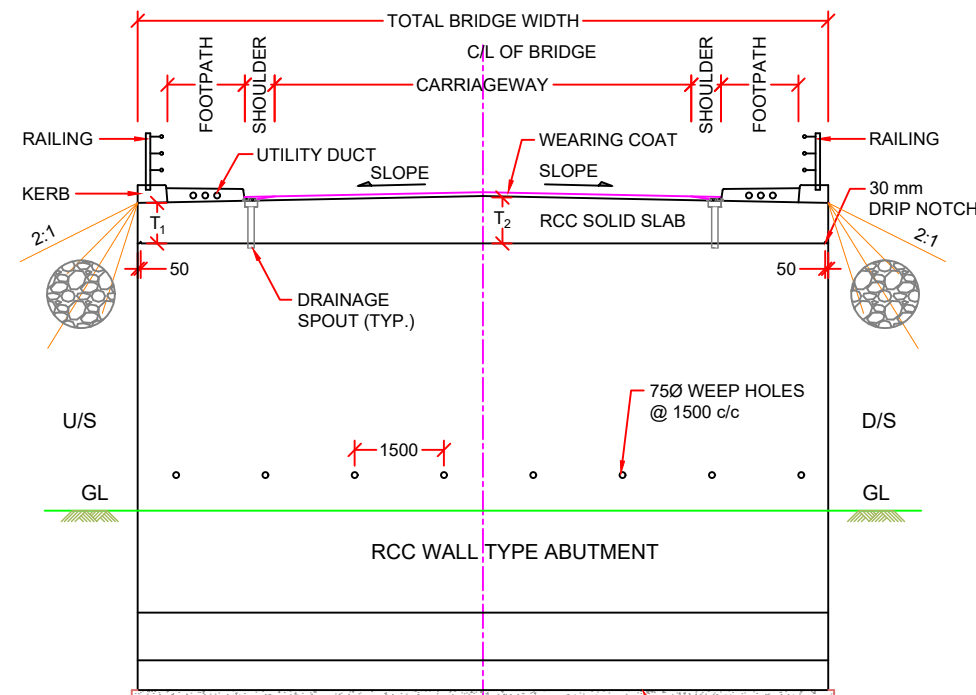
ELEVATION



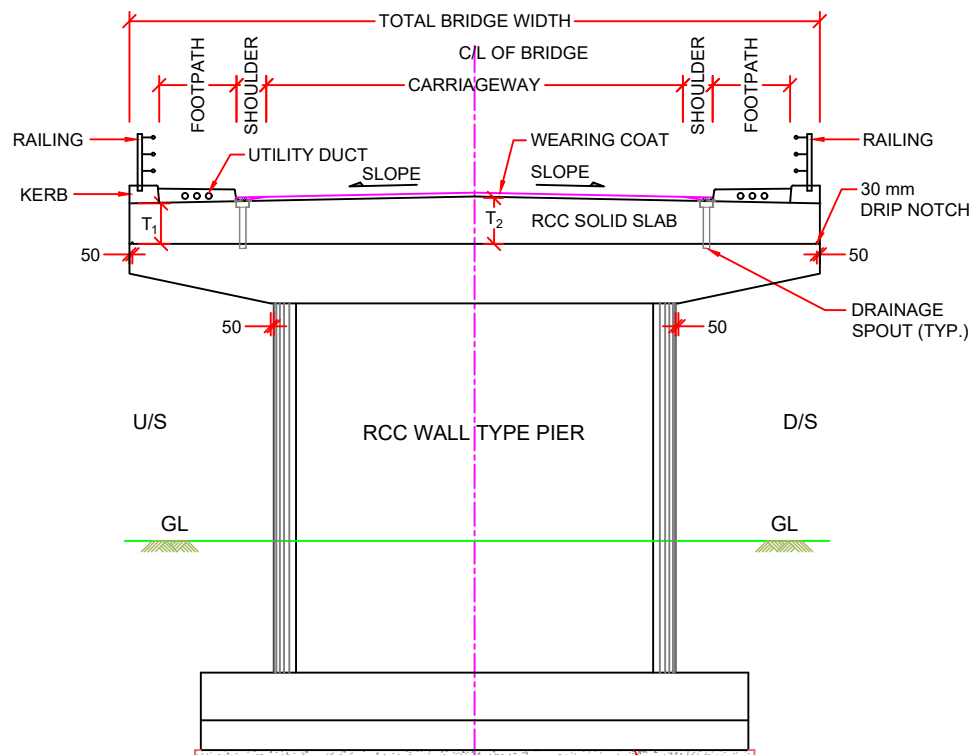
TOP PLAN

- NOTES:
1. DIMENSIONS: ALL DIMENSIONS ARE IN MILLIMETERS.
  2. MATERIALS: CONCRETE GRADE - C32/40  
BLINDING CONCRETE - C12/15  
REINFORCEMENT RIBBED BARS - SPECIFIED  
CHARACTERISTIC VALUE OF MINIMUM  
YIELD STRENGTH  $\geq 500 \text{ N/mm}^2$
  3. COVER TO REINFORCEMENT 60mm
  4. BACKFILLING TO BE DONE ACCORDING TO SPECIFICATIONS.

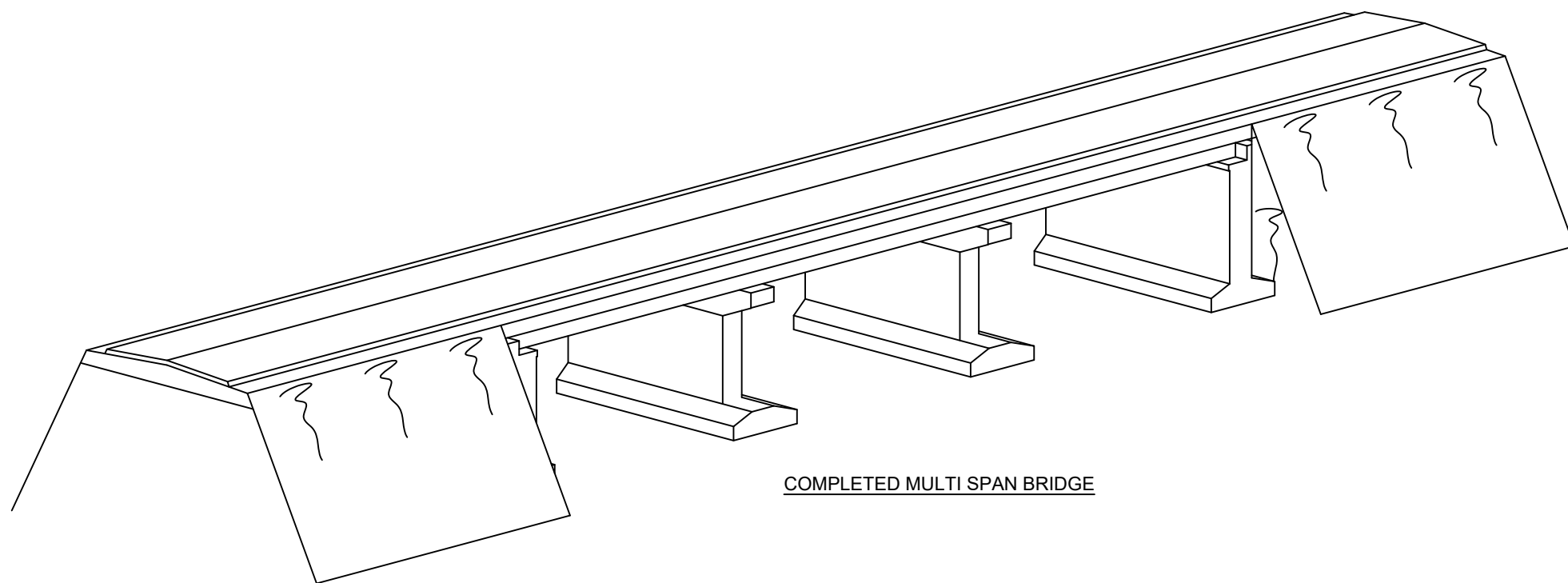
NO.	AMENDMENTS	DATE	CLIENT:				STANDARD BRIDGE DRAWINGS	TYPICAL GENERAL ARRANGEMENT DRAWING OF MULTI SPAN RCC SLAB BRIDGE WITH EFFECTIVE SPAN 4.0M,6.0M,8.0M & 10.0M			
			 REPUBLIC OF KENYA MINISTRY OF ROADS AND TRANSPORT P.O. BOX 30260-00100 NAIROBI					DRAWING NO.: RDM/4/2/1/02			
									Date: Jan. 2024	Scale: N.T.S.	Sheet No.:1/3



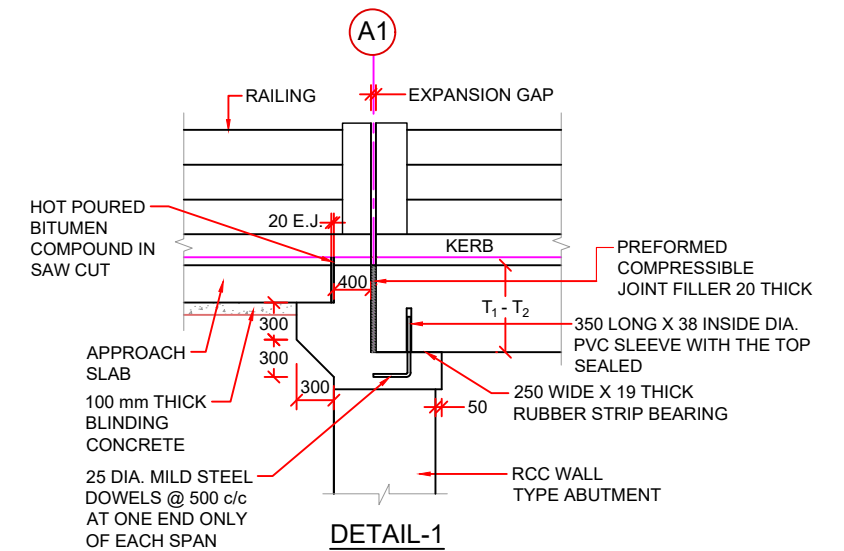
SECTION A-A



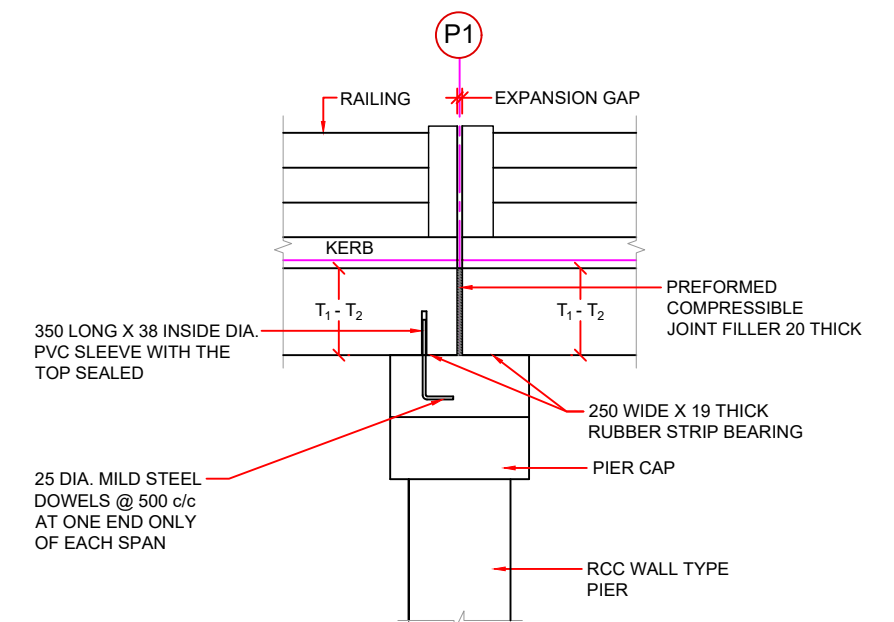
SECTION B-B



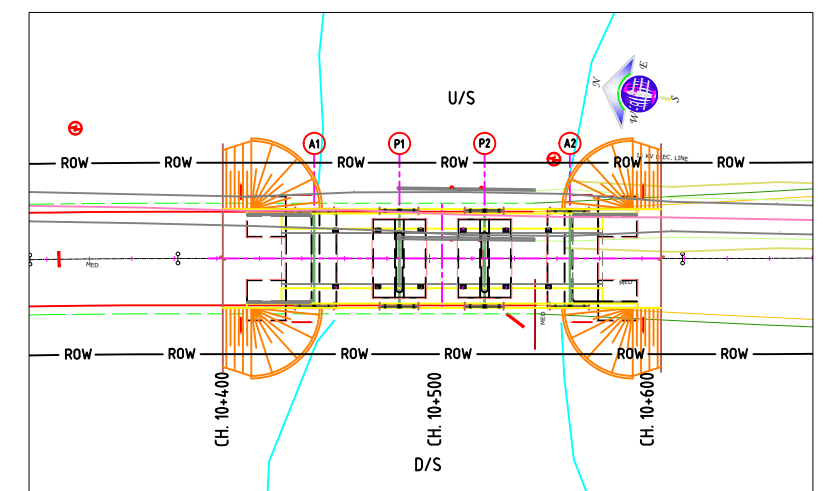
COMPLETED MULTI SPAN BRIDGE



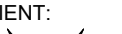
DETAIL-1

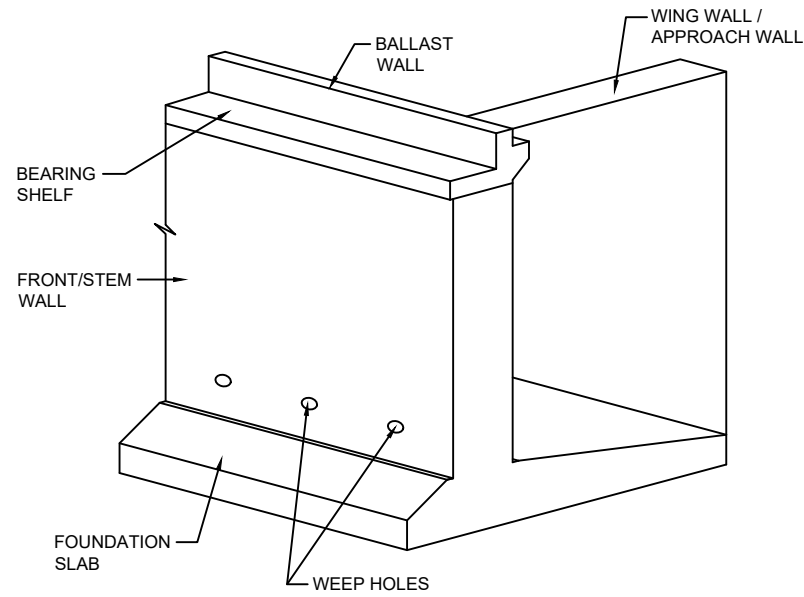


DETAIL-2

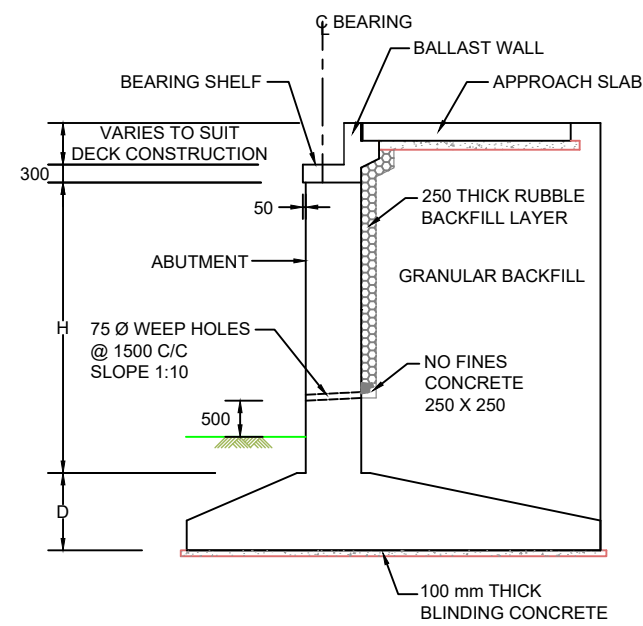


KEY PLAN

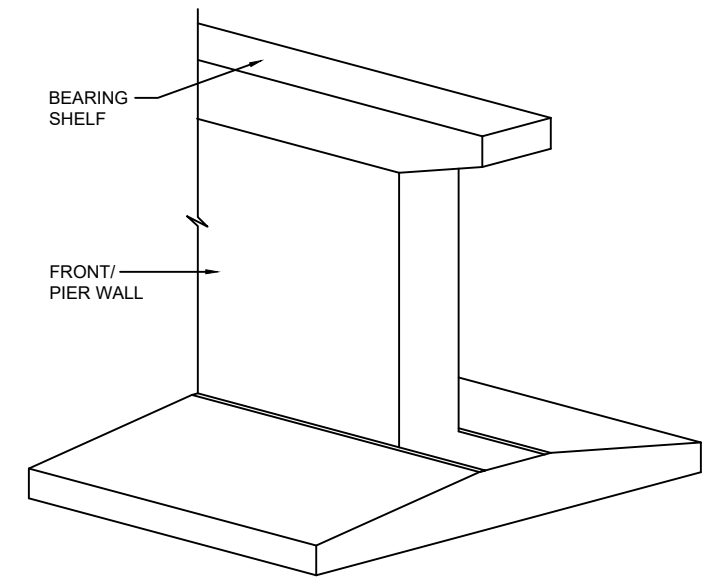
NO.	AMENDMENTS	DATE	CLIENT:						
			 <div>REPUBLIC OF KENYA MINISTRY OF ROADS AND TRANSPORT P.O. BOX 30260-00100 NAIROBI</div>						
							<b>STANDARD BRIDGE DRAWINGS</b>	TYPICAL GENERAL ARRANGEMENT DRAWING OF MULTI SPAN RCC SLAB BRIDGE WITH EFFECTIVE SPAN 4.0M,6.0M,8.0M & 10.0M	
							DRAWING NO.: RDM/4/2/1/02		
							Date: Jan. 2024	Scale: N.T.S.	Sheet No.:2/3



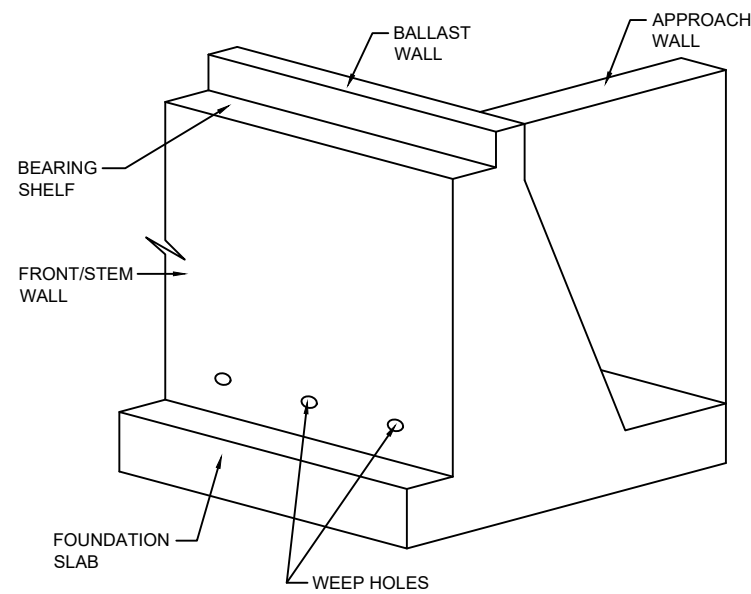
REINFORCED CONCRETE ABUTMENT



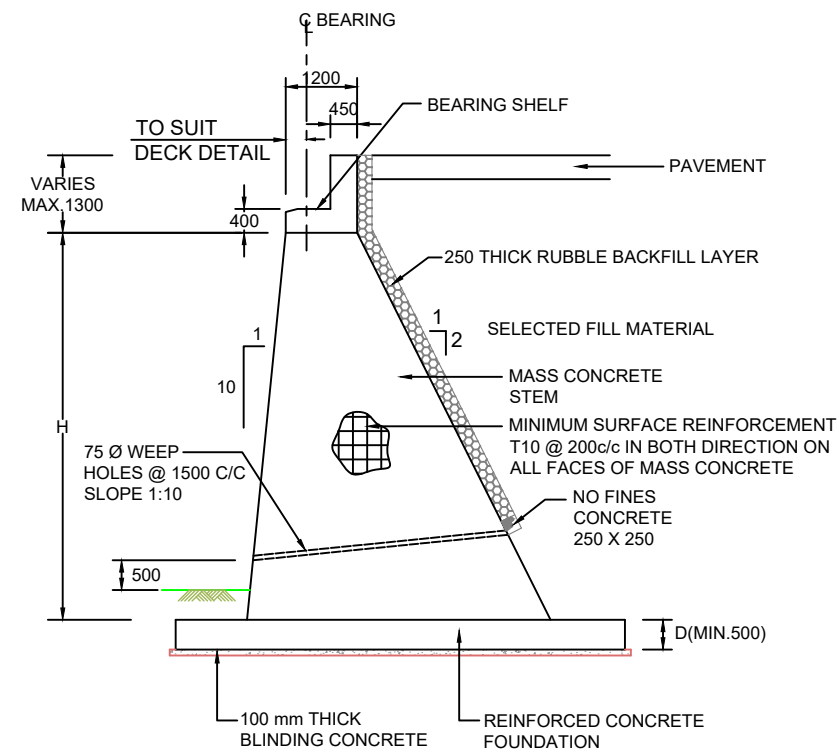
REINFORCED CONCRETE ABUTMENT - SIDE ELEVATION



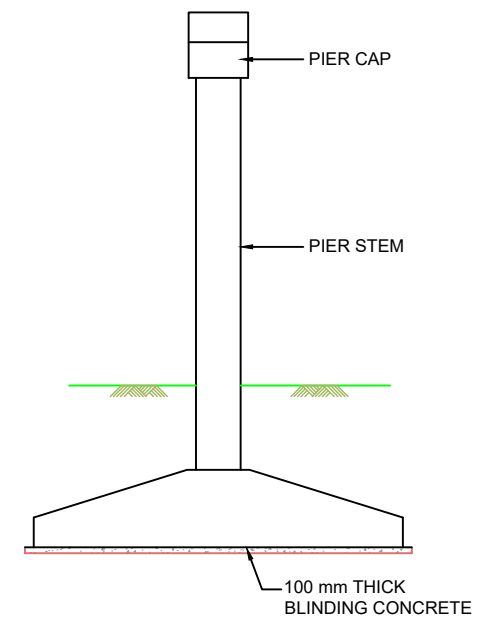
REINFORCED CONCRETE PIER




MASS CONCRETE ABUTMENT



MASS CONCRETE ABUTMENT - SIDE ELEVATION



REINFORCED CONCRETE PIER - SIDE ELEVATION

NO.	AMENDMENTS	DATE	CLIENT:						
			 <div>REPUBLIC OF KENYA MINISTRY OF ROADS AND TRANSPORT P.O. BOX 30260-00100 NAIROBI</div>						
STANDARD BRIDGE DRAWINGS							TYPICAL GENERAL ARRANGEMENT DRAWING OF MULTI SPAN RCC SLAB BRIDGE WITH EFFECTIVE SPAN 4.0M,6.0M,8.0M & 10.0M		
							DRAWING NO.: RDM/4/2/1/02		
							Date: Jan. 2024	Scale: N.T.S.	Sheet No.:3/3